

## CROSS CHECK

299-006, Slate Black

### TECHNICAL INFORMATION

CATEGORY: Upholstery, Panel

CONTENT: 100% Polyester

BACKING: Acrylic

FINISH: Stain Repellent

WIDTH: 54"

WEIGHT: 10.71 oz./ln yd

SHOWN RAILROADED: No

DIRECTIONAL: No

APPROX. ROLL SIZE: 55 yards

APPLICATION: Indoor

### PERFORMANCE



ABRASION RESISTANCE: Passes 258,000 Double Rubs\*  
(Wyzenbeek/Cotton Duck)

BREAKING STRENGTH: Warp 216.0 / Fill 181.0

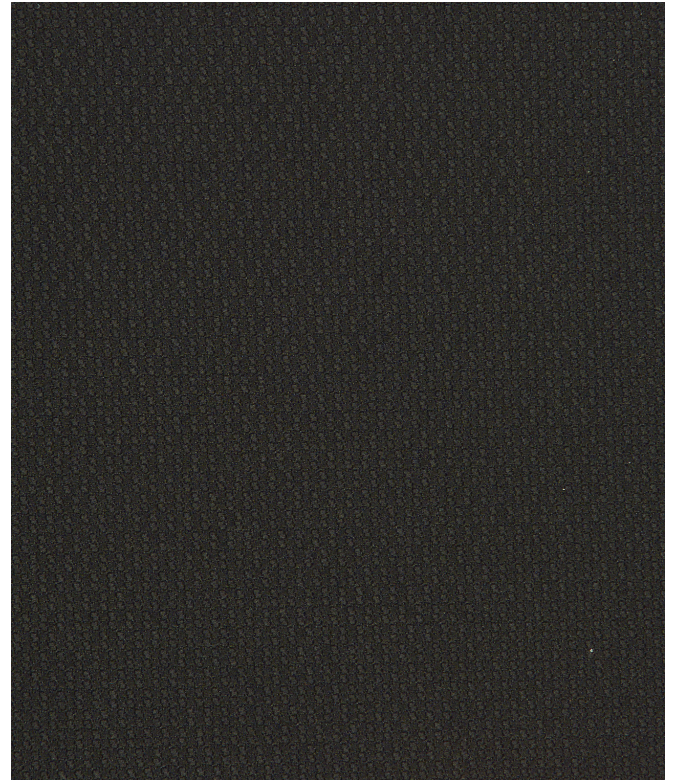
COLORFASTNESS TO CROCKING: Dry: Class 4 min/Wet: Class 3

COLORFASTNESS TO LIGHT: 40 hours

PILLING RESISTANCE: Class 4

SEAM SLIPPAGE: Warp 55.0 / Fill 59.0

\* Multiple factors affect fabric durability and appearance retention, including end-user application and proper maintenance. Wyzenbeek results above 100,000 double rubs have not been shown to be an indicator of increased lifespan.



### REDUCED ENVIRONMENTAL IMPACT

GREENGUARD GOLD CERTIFIED

NO FR ADDITIVES

NO ANTIMICROBIAL ADDITIVES

MINDFUL MATERIALS COMPLIANT

NO ANTIBACTERIAL ADDITIVES

FORMALDEHYDE FREE

PROP 65 COMPLIANT

DOES NOT CONTAIN CONFLICT MINERALS

### FLAMMABILITY

PASSES CAL TB 117-2013

NFPA 260/UFAC CLASS 1

AB 2998 COMPLIANT

ASTM E84 CLASS 2 OR B (ADHERED)

## WARRANTY

STANDARD UPHOLSTERY | '5' FIVE YEAR WARRANTY  
See [Warranty Terms](#) for more information.

## DYE TRANSFER DISCLAIMER

Certain clothing and accessory dyes (such as those used on denim jeans) may migrate to lighter colors. This phenomenon is increased by humidity and temperature and is irreversible. Mayer Fabrics will not assume responsibility for dye transfer caused by external contaminants. Please check compatibility when using this product in combination with painted or varnished surfaces.

## ADDITIONAL INFORMATION

Custom Colors: All patterns can be custom colored. Minimum yardage applies.

Digital Swatch Color Matching: Due to color variations on different monitors and color printers, actual swatch colors may vary slightly. Please request a memo sample from Mayer Fabrics to ensure proper color representation.

## CLEANING & MAINTENANCE

S: Solvent Cleaner - Spot clean, using a mild water-free solvent or dry cleaning product. Clean only in a well-ventilated room and avoid any product containing carbon tetrachloride or other toxic materials. Pretest a small area before proceeding. Always rinse promptly with clean water.



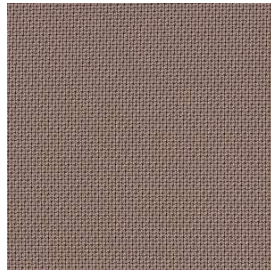
® This 100% polyester fabric is included in the Underwriter's Laboratory Fabric Recognition Program. Additional testing of this U.L. recognized component is not required on approved panels from participating manufacturers.



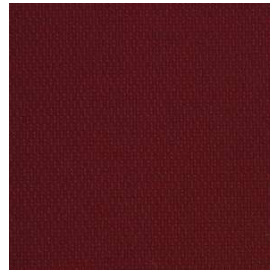
**CROSS CHECK COLORS (18)**



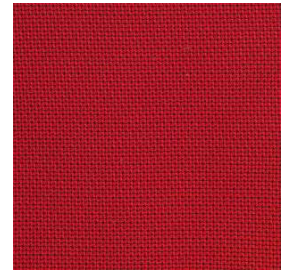
**Otter**  
299-000



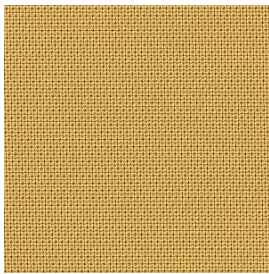
**Taupe**  
299-020



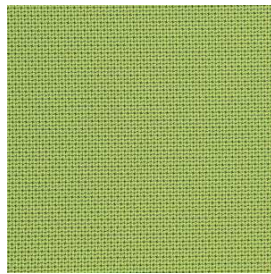
**Vermillion**  
299-011



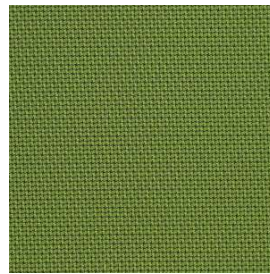
**Red Baron**  
299-021



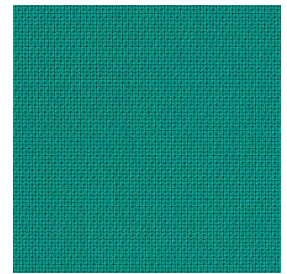
**Sunshine**  
299-002



**Lime**  
299-003



**Evergreen**  
299-033



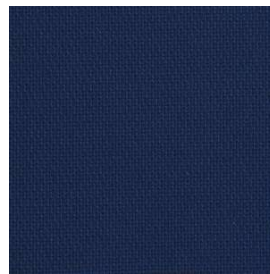
**Peacock**  
299-053



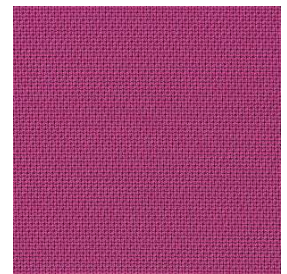
**Imperial**  
299-014



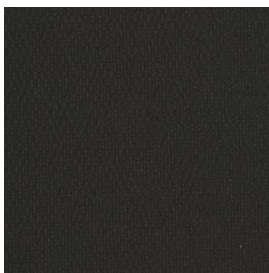
**Blue Ribbon**  
299-024



**Marine**  
299-054



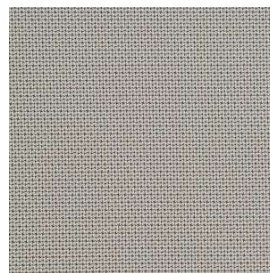
**Plumberry**  
299-015



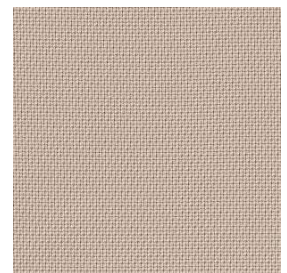
**Slate Black**  
299-006



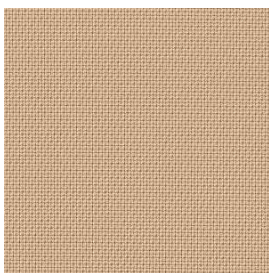
**Platinum**  
299-026



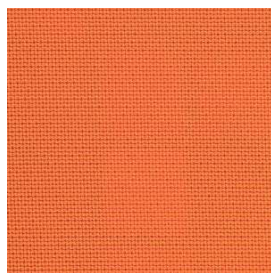
**Dove**  
299-036



**Stone**  
299-027



**Biscuit**  
299-037



**Paradise**  
299-009