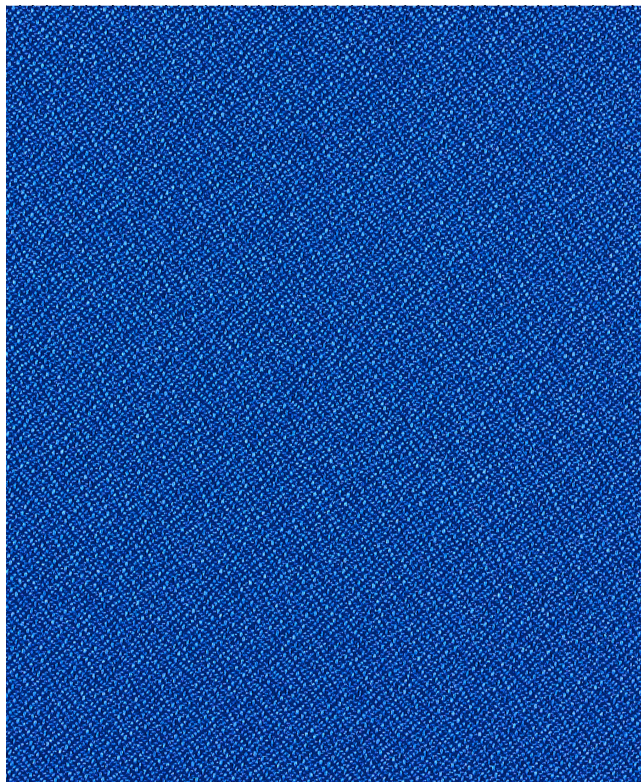


FORTE

298-014, Blue Ray

TECHNICAL INFORMATION

CATEGORY: Upholstery, Panel
 CONTENT: 100% Polyester
 BACKING: Acrylic
 FINISH: Stain Repellent
 WIDTH: 54"
 WEIGHT: 12.1 oz./ln yd
 VISUAL REPEAT: None
 SHOWN RAILROADED: No
 DIRECTIONAL: No
 APPROX. ROLL SIZE: 55 yards
 APPLICATION: Indoor



PERFORMANCE



ABRASION RESISTANCE: Passes 183,000 Double Rubs*
 (Wyzenbeek/Cotton Duck)
 BREAKING STRENGTH: Warp 395.0 / Fill 298.0
 COLORFASTNESS TO CROCKING: Dry: Class 4 min/Wet: Class 4 min
 COLORFASTNESS TO LIGHT: 40 hours
 PILLING RESISTANCE: Class 5
 SEAM SLIPPAGE: Warp 81.0 / Fill 70.0

* Multiple factors affect fabric durability and appearance retention, including end-user application and proper maintenance. Wyzenbeek results above 100,000 double rubs have not been shown to be an indicator of increased lifespan.

REDUCED ENVIRONMENTAL IMPACT

GREENGUARD GOLD CERTIFIED
 NO FR ADDITIVES
 NO ANTIMICROBIAL ADDITIVES
 NO ANTIBACTERIAL ADDITIVES
 MINDFUL MATERIALS COMPLIANT
 FORMALDEHYDE FREE
 PROP 65 COMPLIANT
 DOES NOT CONTAIN CONFLICT MINERALS

FLAMMABILITY

PASSES CAL TB 117-2013
 NFPA 260/UFAC CLASS 1
 AB 2998 COMPLIANT
 ASTM E84 CLASS 2 OR B (ADHERED)

WARRANTY

STANDARD UPHOLSTERY | '5' FIVE YEAR WARRANTY
See [Warranty Terms](#) for more information.

DYE TRANSFER DISCLAIMER

Certain clothing and accessory dyes (such as those used on denim jeans) may migrate to lighter colors. This phenomenon is increased by humidity and temperature and is irreversible. Mayer Fabrics will not assume responsibility for dye transfer caused by external contaminants. Please check compatibility when using this product in combination with painted or varnished surfaces.

ADDITIONAL INFORMATION

Custom Colors: All patterns can be custom colored. Minimum yardage applies.

Digital Swatch Color Matching: Due to color variations on different monitors and color printers, actual swatch colors may vary slightly. Please request a memo sample from Mayer Fabrics to ensure proper color representation.

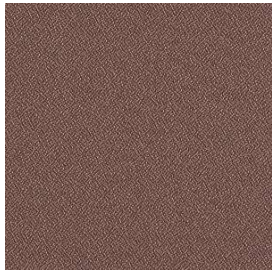
CLEANING & MAINTENANCE

WS: Water/Solvent Cleaner - Spot clean with a mild solvent, an upholstery shampoo, or the foam from a mild detergent. When using a solvent or dry cleaning product, follow instructions carefully and clean only in a well-ventilated room. Avoid any product that contains carbon tetrachloride or other toxic materials. With either method, pretest a small area before proceeding. Always rinse promptly with clean water.



This 100% polyester fabric is included in the Underwriter's Laboratory Fabric Recognition Program. Additional testing of this U.L. recognized component is not required on approved panels from participating manufacturers.

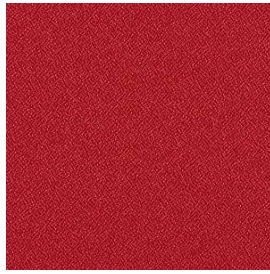
FORTE COLORS (21)



Fudge
298-000



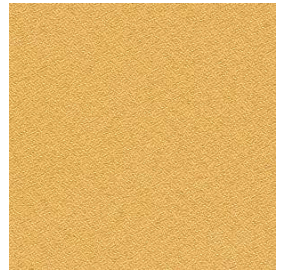
Mocha
298-010



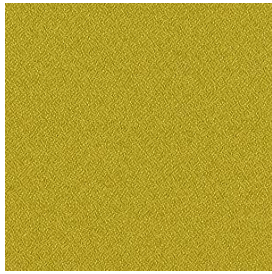
Rouge
298-001



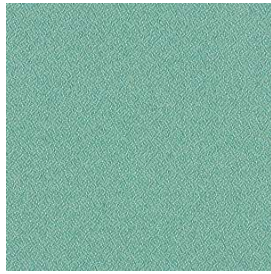
Port
298-011



Sunray
298-012



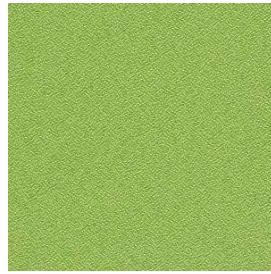
Avocado
298-013



Fairway
298-033



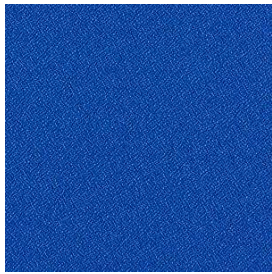
Hedge
298-043



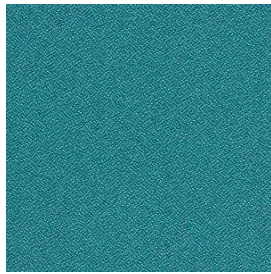
Grass
298-053



Cadet
298-004



Blue Ray
298-014



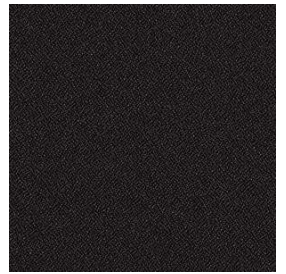
Peacock
298-044



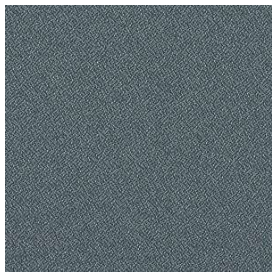
Grape
298-025



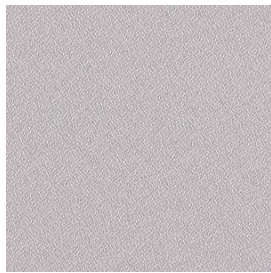
Magenta
298-035



Tuxedo
298-006



Slate
298-016



Flint
298-026



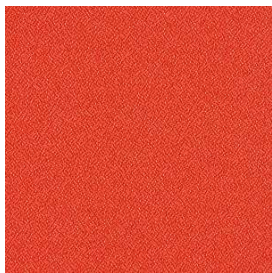
Char
298-036



Pumice
298-017



Oatmeal
298-027



Pimento
298-009