

NYLO-STAT
259-014, Parade Blue

TECHNICAL INFORMATION

CATEGORY: Upholstery
CONTENT: 99% Nylon/1% Carbon Fiber
BACKING: Acrylic
FINISH: None
WIDTH: 54"
WEIGHT: 19 oz./ln yd
VISUAL REPEAT: None
SHOWN RAILROADED: No
DIRECTIONAL: Yes
APPROX. ROLL SIZE: 30 yards
APPLICATION: Indoor

PERFORMANCE

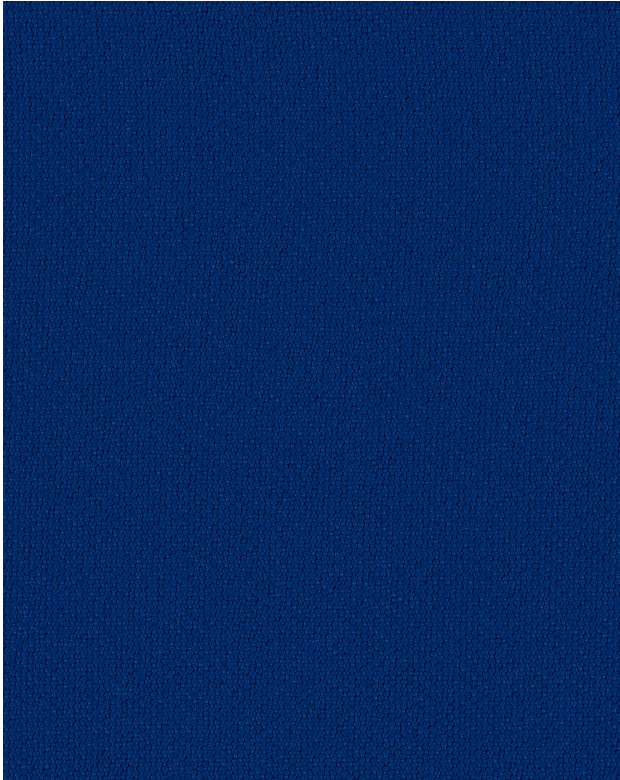


ABRASION RESISTANCE: Passes 150,000 Double Rubs*
(Wyzenbeek/Cotton Duck)
BREAKING STRENGTH: Warp 278.0 / Fill 313.0
COLORFASTNESS TO CROCKING: Dry: Class 4 min/Wet: Class 4 min
COLORFASTNESS TO LIGHT: 40 hours
PILLING RESISTANCE: Class 5
SEAM SLIPPAGE: Warp 67.6 / Fill 97.3

* Multiple factors affect fabric durability and appearance retention, including end-user application and proper maintenance.
Wyzenbeek results above 100,000 double rubs have not been shown to be an indicator of increased lifespan.

FLAMMABILITY

PASSES NFPA 260/UFAC CLASS 1
AB 2998 COMPLIANT
CAL 117 SECTION E



REDUCED ENVIRONMENTAL IMPACT

GREENGUARD GOLD CERTIFIED
PFAS FREE
NO FR ADDITIVES
NO ANTIMICROBIAL ADDITIVES
NO ANTIBACTERIAL ADDITIVES
BPA FREE
FORMALDEHYDE FREE
PROP 65 COMPLIANT
DOES NOT CONTAIN CONFLICT MINERALS
MILLED IN AMERICA

WARRANTY

STANDARD UPHOLSTERY | '5' FIVE YEAR WARRANTY
See [Warranty Terms](#) for more information.

DYE TRANSFER DISCLAIMER

Certain clothing and accessory dyes (such as those used on denim jeans) may migrate to lighter colors. This phenomenon is increased by humidity and temperature and is irreversible. Mayer Fabrics will not assume responsibility for dye transfer caused by external contaminants. Please check compatibility when using this product in combination with painted or varnished surfaces.

ADDITIONAL INFORMATION

Custom Colors: All patterns can be custom colored. Minimum yardage applies.

Digital Swatch Color Matching: Due to color variations on different monitors and color printers, actual swatch colors may vary slightly. Please request a memo sample from Mayer Fabrics to ensure proper color representation.

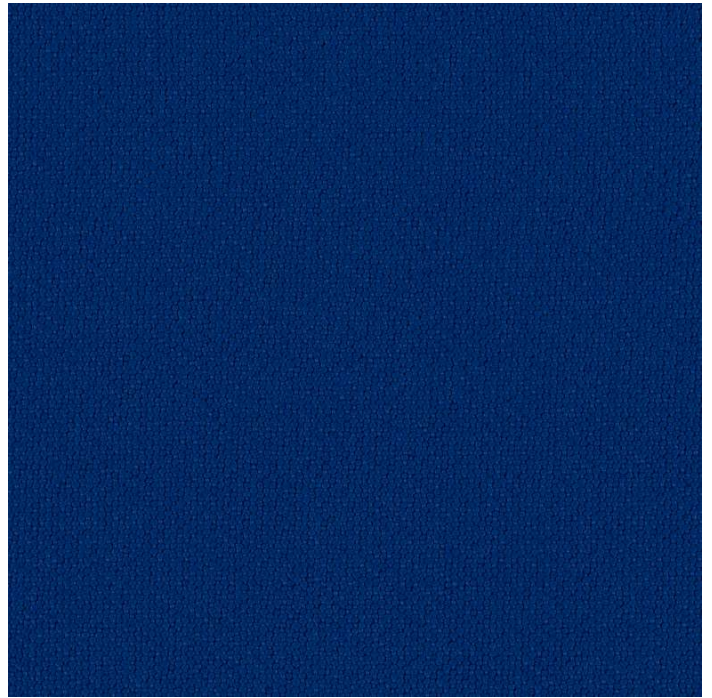
CLEANING & MAINTENANCE

WS: Water/Solvent Cleaner - Spot clean with a mild solvent, an upholstery shampoo, or the foam from a mild detergent. When using a solvent or dry cleaning product, follow instructions carefully and clean only in a well-ventilated room. Avoid any product that contains carbon tetrachloride or other toxic materials. With either method, pretest a small area before proceeding. Always rinse promptly with clean water.

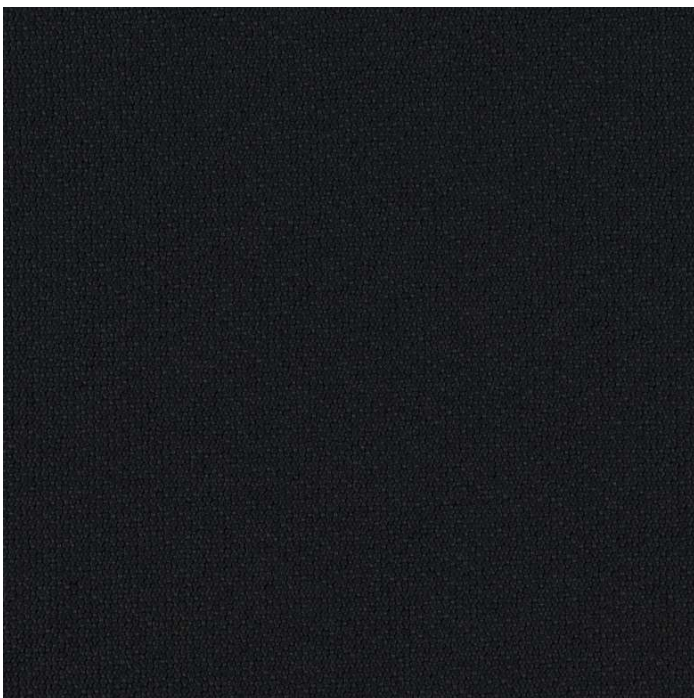
NYLO-STAT COLORS (4)



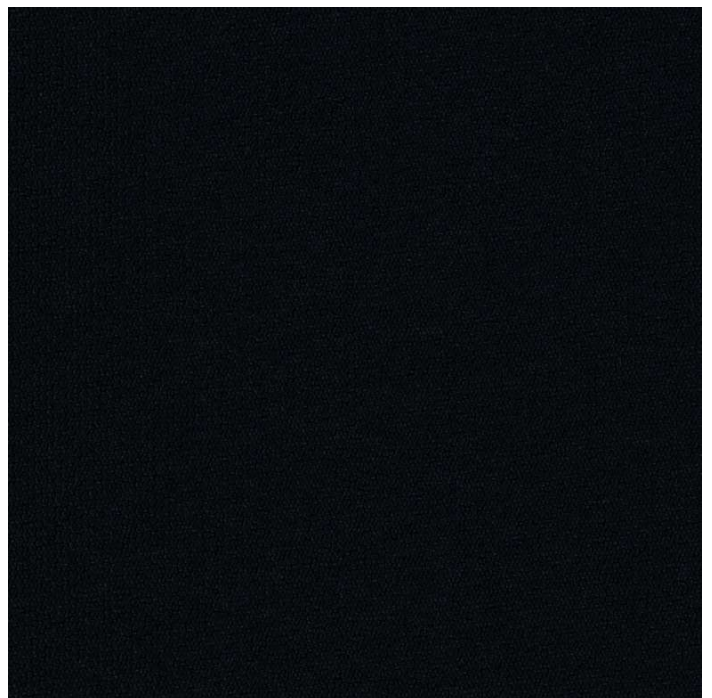
Sapphire
259-004



Parade Blue
259-014



Oxford
259-006



Black
259-016