

VOGUE

202-013, Forest

TECHNICAL INFORMATION

CATEGORY: Upholstery
 CONTENT: 100% Polyester
 BACKING: Latex
 FINISH: Stain Repellent
 WIDTH: 54"
 WEIGHT: 16.88 oz./ln yd
 VISUAL REPEAT: 13.5 in/34.29 cm H, 16.25 in/41.28 cm V
 SHOWN RAILROADED: No
 DIRECTIONAL: Yes
 APPROX. ROLL SIZE: 60 yards

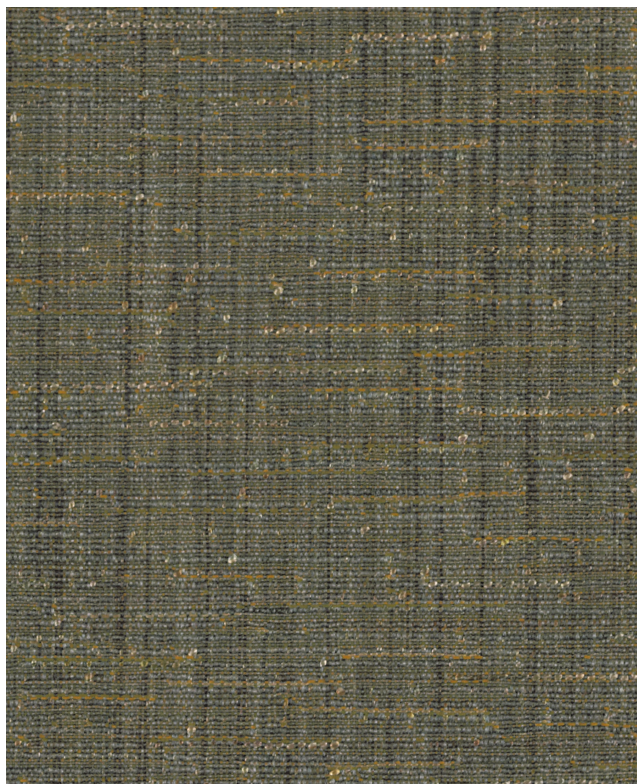
PERFORMANCE



ABRASION RESISTANCE: Exceeds 50,000 Double Rubs
 (Wyzenbeek/Cotton Duck)
 BREAKING STRENGTH: Warp 100.0 / Fill 100.0
 COLORFASTNESS TO CROCKING: Dry: Class 4/Wet: Class 4
 COLORFASTNESS TO LIGHT: 40 hours
 PILLING RESISTANCE: Class 4
 SEAM SLIPPAGE: Warp 95.0 / Fill 56.0

FLAMMABILITY

PASSES CAL TB 117-2013
 NFPA 260/UFAC CLASS 1
 AB 2998 COMPLIANT
 CAL 117 SECTION E
 MAY COMPLY WITH CAL. TECH. BUL. 133 WHEN COMBINED WITH APPROPRIATE COMPONENTS.



REDUCED ENVIRONMENTAL IMPACT

GREENGUARD GOLD CERTIFIED
 NO FR ADDITIVES
 NO ANTIMICROBIAL ADDITIVES
 NO ANTIBACTERIAL ADDITIVES
 MINDFUL MATERIALS COMPLIANT
 MILLED IN AMERICA
 DOES NOT CONTAIN CONFLICT MINERALS
 BERRY COMPLIANT

WARRANTY

STANDARD UPHOLSTERY | '5' FIVE YEAR WARRANTY
See [Warranty Terms](#) for more information.

DYE TRANSFER DISCLAIMER

Certain clothing and accessory dyes (such as those used on denim jeans) may migrate to lighter colors. This phenomenon is increased by humidity and temperature and is irreversible. Mayer Fabrics will not assume responsibility for dye transfer caused by external contaminants. Please check compatibility when using this product in combination with painted or varnished surfaces.

ADDITIONAL INFORMATION

Custom Colors: All patterns can be custom colored. Minimum yardage applies.

Digital Swatch Color Matching: Due to color variations on different monitors and color printers, actual swatch colors may vary slightly. Please request a memo sample from Mayer Fabrics to ensure proper color representation.

CLEANING & MAINTENANCE

S: Solvent Cleaner - Spot clean, using a mild water-free solvent or dry cleaning product. Clean only in a well-ventilated room and avoid any product containing carbon tetrachloride or other toxic materials. Pretest a small area before proceeding. Always rinse promptly with clean water.