

MIMIC
174-016, Cloud

TECHNICAL INFORMATION

CATEGORY: Panel
CONTENT: 67% Recycled Polyester/67% Post-Consumer Recycled Polyester/33% Polyester
BACKING: None
FINISH: None
WIDTH: 66"
WEIGHT: 11.69 oz./ln yd
VISUAL REPEAT: 16.75 in/42.54 cm H, 11.125 in/28.26 cm V
SHOWN RAILROADED: No
DIRECTIONAL: Yes
APPROX. ROLL SIZE: 60 yards
APPLICATION: Indoor

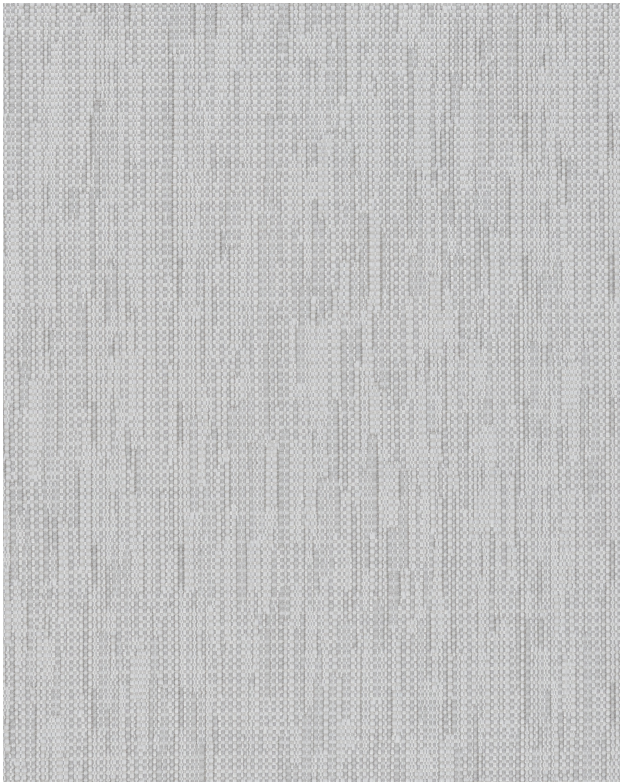
PERFORMANCE



BREAKING STRENGTH: Warp 268.0 / Fill 210.0
COLORFASTNESS TO CROCKING: Dry: Class 4 min/Wet: Class 3 min
COLORFASTNESS TO LIGHT: 40 hours
PILLING RESISTANCE: Class 5
SEAM SLIPPAGE: Warp 23.0 / Fill 49.0

FLAMMABILITY

PASSES CAL TB 117-2013
NFPA 260/UFAC CLASS 1
AB 2998 COMPLIANT
ASTM E84 CLASS 1 OR A (UNADHERED)



REDUCED ENVIRONMENTAL IMPACT

GREENGUARD GOLD CERTIFIED
PFAS FREE
NO FR ADDITIVES
NO ANTIMICROBIAL ADDITIVES
NO ANTIBACTERIAL ADDITIVES
MINDFUL MATERIALS COMPLIANT
BPA FREE
FORMALDEHYDE FREE
TRIS FREE
PROP 65 COMPLIANT
REACH COMPLIANT
ROHS COMPLIANT
DOES NOT CONTAIN CONFLICT MINERALS
HPD AVAILABLE
MILLED IN AMERICA

WARRANTY

PANEL | '5' FIVE YEAR WARRANTY

See [Warranty Terms](#) for more information.

DYE TRANSFER DISCLAIMER

Certain clothing and accessory dyes (such as those used on denim jeans) may migrate to lighter colors. This phenomenon is increased by humidity and temperature and is irreversible. Mayer Fabrics will not assume responsibility for dye transfer caused by external contaminants. Please check compatibility when using this product in combination with painted or varnished surfaces.

ADDITIONAL INFORMATION

Custom Colors: All patterns can be custom colored. Minimum yardage applies.

Digital Swatch Color Matching: Due to color variations on different monitors and color printers, actual swatch colors may vary slightly. Please request a memo sample from Mayer Fabrics to ensure proper color representation.

CLEANING & MAINTENANCE

WS: Water/Solvent Cleaner - Spot clean with a mild solvent, an upholstery shampoo, or the foam from a mild detergent. When using a solvent or dry cleaning product, follow instructions carefully and clean only in a well-ventilated room. Avoid any product that contains carbon tetrachloride or other toxic materials. With either method, pretest a small area before proceeding. Always rinse promptly with clean water.

BC: Bleach Cleanable - 1 parts bleach, 9 parts water = 10% bleach, 90% water solution. Do not clean / disinfect fabric for longer than 10 minutes using the 10% bleach solution. Always rinse promptly with clean water after applying the bleach solution. Failure to do so will void any and all warranties.



® This 100% polyester fabric is included in the Underwriter's Laboratory Fabric Recognition Program. Additional testing of this U.L. recognized component is not required on approved panels from participating manufacturers.

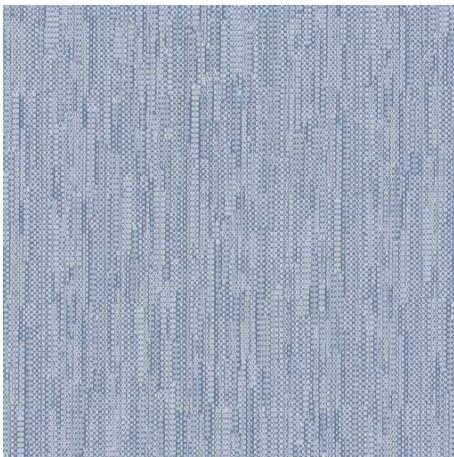
MIMIC COLORS (6)



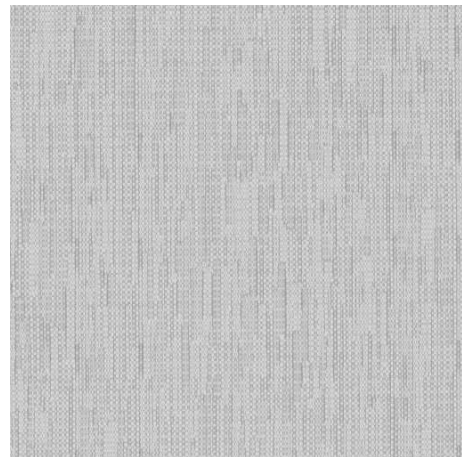
Taupe
174-000



Patina
174-003



Lake
174-004



Cloud
174-016



Eggshell
174-007



Dune
174-017