

DIVERT

172-024, Bayberry

TECHNICAL INFORMATION

CATEGORY: Panel  
CONTENT: 75% Post-Consumer Recycled Polyester/25% Polyester  
BACKING: None  
FINISH: None  
WIDTH: 66"  
WEIGHT: 16.2 oz./ln yd  
VISUAL REPEAT: None  
SHOWN RAILROADED: No  
DIRECTIONAL: No  
APPROX. ROLL SIZE: 50 yards  
APPLICATION: Indoor

PERFORMANCE



BREAKING STRENGTH: Warp 325.0 / Fill 275.0  
COLORFASTNESS TO CROCKING: Dry: Class 4/Wet: Class 4  
COLORFASTNESS TO LIGHT: 40 hours  
SEAM SLIPPAGE: Warp 135.0 / Fill 140.0

FLAMMABILITY

PASSES CAL TB 117-2013  
AB 2998 COMPLIANT  
ASTM E84 CLASS 1 OR A (UNADHERED)



REDUCED ENVIRONMENTAL IMPACT

GREENGUARD GOLD CERTIFIED  
PFAS FREE  
NO FR ADDITIVES  
NO ANTIMICROBIAL ADDITIVES  
NO ANTIBACTERIAL ADDITIVES  
BPA FREE  
FORMALDEHYDE FREE  
TRIS FREE  
PROP 65 COMPLIANT  
MILLED IN AMERICA  
REACH COMPLIANT  
ROHS COMPLIANT  
DOES NOT CONTAIN CONFLICT MINERALS  
BERRY COMPLIANT

## WARRANTY

PANEL | '5' FIVE YEAR WARRANTY

See [Warranty Terms](#) for more information.

## DYE TRANSFER DISCLAIMER

Certain clothing and accessory dyes (such as those used on denim jeans) may migrate to lighter colors. This phenomenon is increased by humidity and temperature and is irreversible. Mayer Fabrics will not assume responsibility for dye transfer caused by external contaminants. Please check compatibility when using this product in combination with painted or varnished surfaces.

## ADDITIONAL INFORMATION

Custom Colors: All patterns can be custom colored. Minimum yardage applies.

Digital Swatch Color Matching: Due to color variations on different monitors and color printers, actual swatch colors may vary slightly. Please request a memo sample from Mayer Fabrics to ensure proper color representation.

## CLEANING & MAINTENANCE

WS: Water/Solvent Cleaner - Spot clean with a mild solvent, an upholstery shampoo, or the foam from a mild detergent. When using a solvent or dry cleaning product, follow instructions carefully and clean only in a well-ventilated room. Avoid any product that contains carbon tetrachloride or other toxic materials. With either method, pretest a small area before proceeding. Always rinse promptly with clean water.

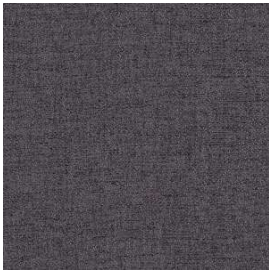


® This 100% polyester fabric is included in the Underwriter's Laboratory Fabric Recognition Program. Additional testing of this U.L. recognized component is not required on approved panels from participating manufacturers.

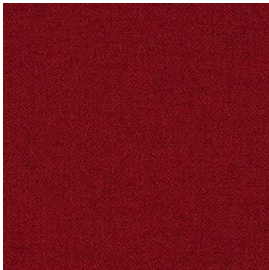
DIVERT COLORS (17)



**Earth**  
172-000



**Espresso**  
172-010



**Cardinal**  
172-001



**Jungle**  
172-013



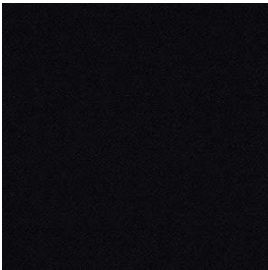
**Cobalt**  
172-004



**Sapphire**  
172-014



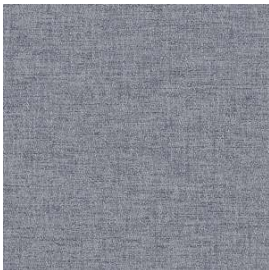
**Bayberry**  
172-024



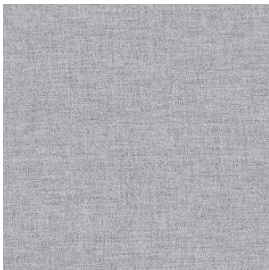
**Black**  
172-006



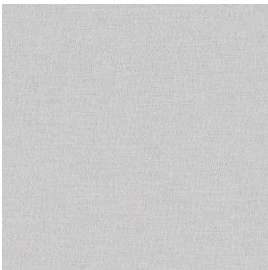
**Storm**  
172-016



**Grey**  
172-026



**Aluminum**  
172-036



**Cloud**  
172-007



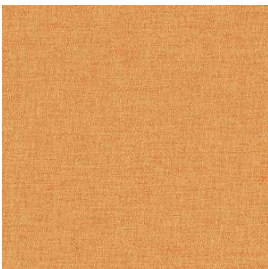
**Eggshell**  
172-017



**Desert Sand**  
172-027



**Wheat**  
172-037



**Spice**  
172-009



**Orange**  
172-019