

PEBBLE BEACH

165-000, Earth

TECHNICAL INFORMATION

CATEGORY: Panel
CONTENT: 66% Post-Consumer Recycled Polyester/34% Polyester
BACKING: None
FINISH: None
WIDTH: 66"
WEIGHT: 14.3 oz./ln yd
VISUAL REPEAT: None
SHOWN RAILROADED: No
DIRECTIONAL: Yes
APPROX. ROLL SIZE: 50 yards



PERFORMANCE



ABRASION RESISTANCE: n/a
BREAKING STRENGTH: Warp 324.0 / Fill 280.0
COLORFASTNESS TO CROCKING: Dry: Class 4/Wet: Class 4
COLORFASTNESS TO LIGHT: 40 hours
PILLING RESISTANCE: Class n/a
SEAM SLIPPAGE: Warp 135.0 / Fill 140.0

FLAMMABILITY

PASSES CAL TB 117-2013
AB 2998 COMPLIANT
ASTM E84 CLASS 1 OR A (UNADHERED)
MAY COMPLY WITH CAL. TECH. BUL. 133 WHEN COMBINED WITH APPROVED COMPLEMENTS.

REDUCED ENVIRONMENTAL IMPACT

GREENGUARD GOLD CERTIFIED
PFAS FREE
NO FR ADDITIVES
HHI / GREENHEALTH COMPLIANT
NO ANTIMICROBIAL ADDITIVES
NO ANTIBACTERIAL ADDITIVES
MINDFUL MATERIALS COMPLIANT
PROP 65 COMPLIANT
ROHS COMPLIANT
DOES NOT CONTAIN CONFLICT MINERALS
BERRY COMPLIANT

WARRANTY

PANEL | '5' FIVE YEAR WARRANTY

See [Warranty Terms](#) for more information.

DYE TRANSFER DISCLAIMER

Certain clothing and accessory dyes (such as those used on denim jeans) may migrate to lighter colors. This phenomenon is increased by humidity and temperature and is irreversible. Mayer Fabrics will not assume responsibility for dye transfer caused by external contaminants. Please check compatibility when using this product in combination with painted or varnished surfaces.

ADDITIONAL INFORMATION

Custom Colors: All patterns can be custom colored. Minimum yardage applies.

Digital Swatch Color Matching: Due to color variations on different monitors and color printers, actual swatch colors may vary slightly. Please request a memo sample from Mayer Fabrics to ensure proper color representation.

CLEANING & MAINTENANCE

WS: Water/Solvent Cleaner - Spot clean with a mild solvent, an upholstery shampoo, or the foam from a mild detergent. When using a solvent or dry cleaning product, follow instructions carefully and clean only in a well-ventilated room. Avoid any product that contains carbon tetrachloride or other toxic materials. With either method, pretest a small area before proceeding. Always rinse promptly with clean water.

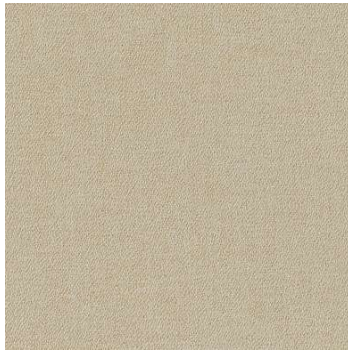


® This 100% polyester fabric is included in the Underwriter's Laboratory Fabric Recognition Program. Additional testing of this U.L. recognized component is not required on approved panels from participating manufacturers.

PEBBLE BEACH COLORS (11)



Earth
165-000



Linen
165-002



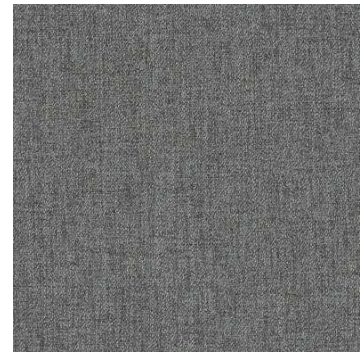
Spring
165-003



Aloe
165-013



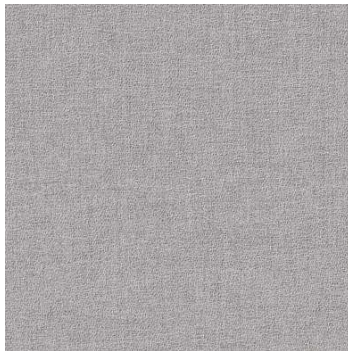
Blue Mist
165-004



Storm
165-006



Gray Mix
165-016



Aluminum
165-026



Parchment
165-007



Taupe
165-017



Mesa
165-009