

FRESCO
163-006, Pewter

TECHNICAL INFORMATION

CATEGORY: Panel
CONTENT: 100% Post-Consumer Recycled Polyester
BACKING: None
FINISH: None
WIDTH: 66"
WEIGHT: 10 oz./ln yd
VISUAL REPEAT: None
SHOWN RAILROADED: No
DIRECTIONAL: Yes
APPROX. ROLL SIZE: 80 yards

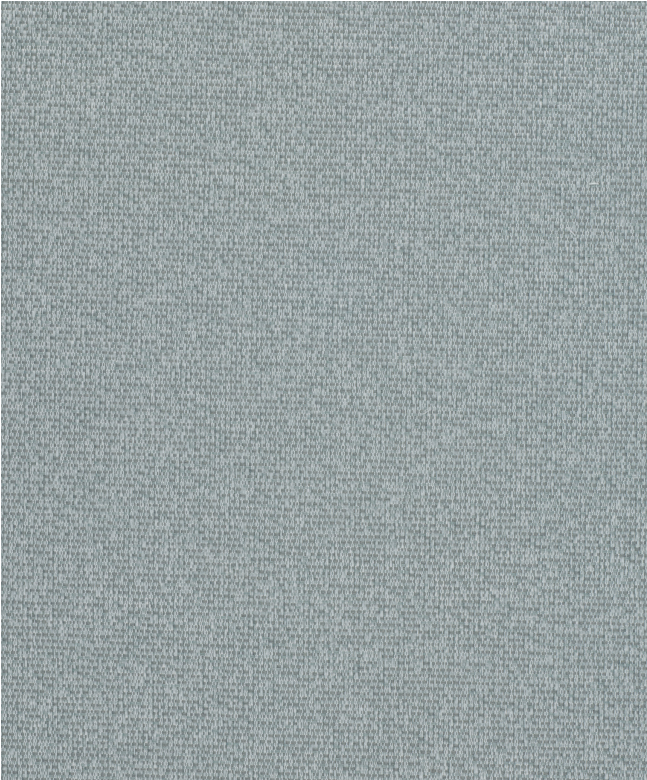
PERFORMANCE



ABRASION RESISTANCE: N/A
BREAKING STRENGTH: Warp 100.0 / Fill 100.0
COLORFASTNESS TO CROCKING: Dry: Class 4 min/Wet: Class 4 min
COLORFASTNESS TO LIGHT: 40 hours
PILLING RESISTANCE: Class N/A

FLAMMABILITY

PASSES AB 2998 COMPLIANT
ASTM E84 CLASS 1 OR A (UNADHERED)
CAL 117 SECTION E
MAY COMPLY WITH CAL. TECH. BUL. 133 WHEN COMBINED WITH APPROVED COMPLEMENTS.



REDUCED ENVIRONMENTAL IMPACT

GREENGUARD GOLD CERTIFIED
PFAS FREE
NO FR ADDITIVES
HHI / GREENHEALTH COMPLIANT
NO ANTIMICROBIAL ADDITIVES
NO ANTIBACTERIAL ADDITIVES
MINDFUL MATERIALS COMPLIANT
MADE IN AMERICA
DOES NOT CONTAIN CONFLICT MINERALS

WARRANTY

PANEL | '5' FIVE YEAR WARRANTY

See [Warranty Terms](#) for more information.

DYE TRANSFER DISCLAIMER

Certain clothing and accessory dyes (such as those used on denim jeans) may migrate to lighter colors. This phenomenon is increased by humidity and temperature and is irreversible. Mayer Fabrics will not assume responsibility for dye transfer caused by external contaminants. Please check compatibility when using this product in combination with painted or varnished surfaces.

ADDITIONAL INFORMATION

Custom Colors: All patterns can be custom colored. Minimum yardage applies.

Digital Swatch Color Matching: Due to color variations on different monitors and color printers, actual swatch colors may vary slightly. Please request a memo sample from Mayer Fabrics to ensure proper color representation.

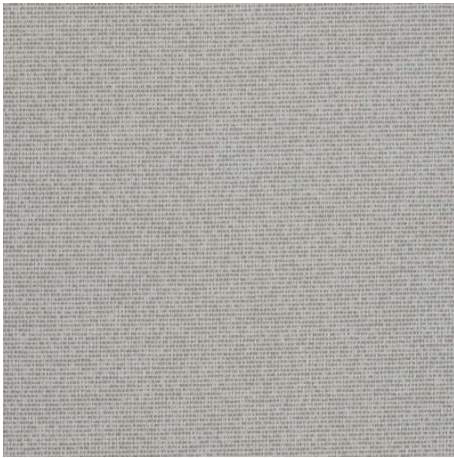
CLEANING & MAINTENANCE

WS: Water/Solvent Cleaner - Spot clean with a mild solvent, an upholstery shampoo, or the foam from a mild detergent. When using a solvent or dry cleaning product, follow instructions carefully and clean only in a well-ventilated room. Avoid any product that contains carbon tetrachloride or other toxic materials. With either method, pretest a small area before proceeding. Always rinse promptly with clean water.

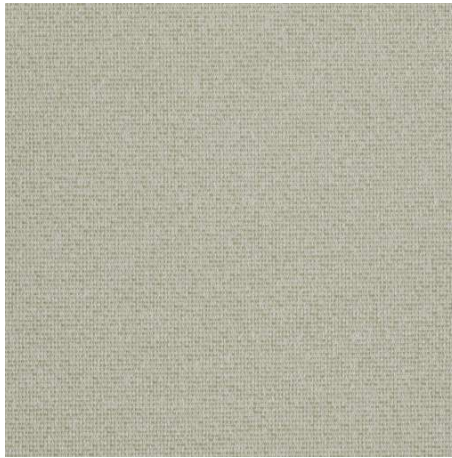


® This 100% polyester fabric is included in the Underwriter's Laboratory Fabric Recognition Program. Additional testing of this U.L. recognized component is not required on approved panels from participating manufacturers.

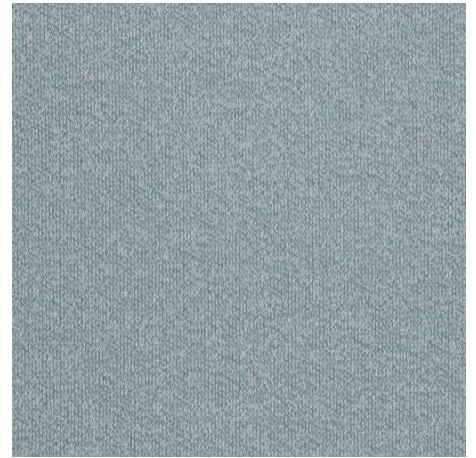
FRESCO COLORS (9)



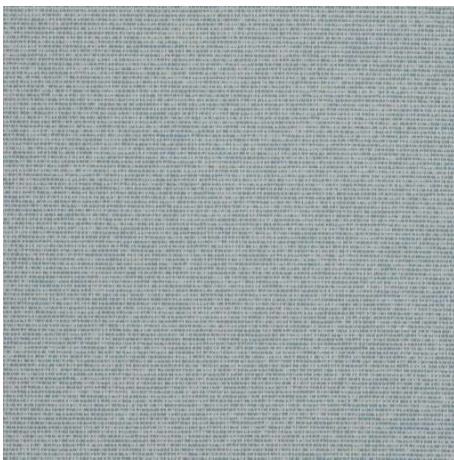
Earth
163-000



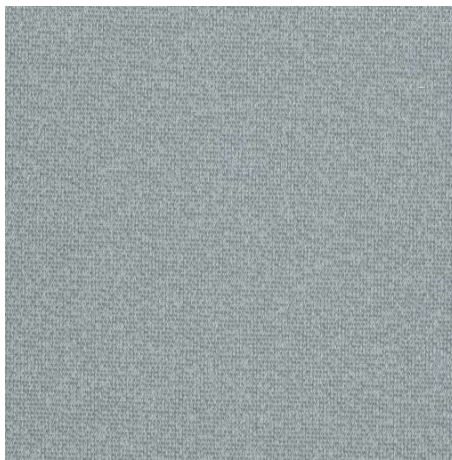
Patina
163-003



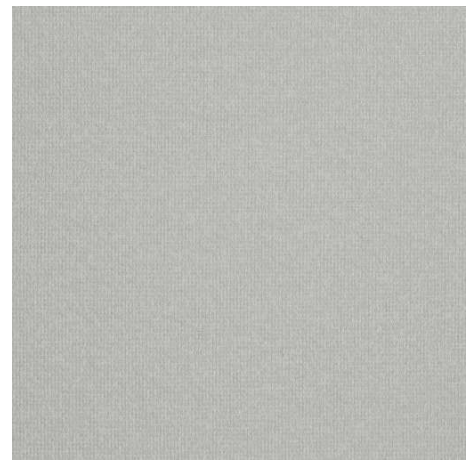
Sky
163-004



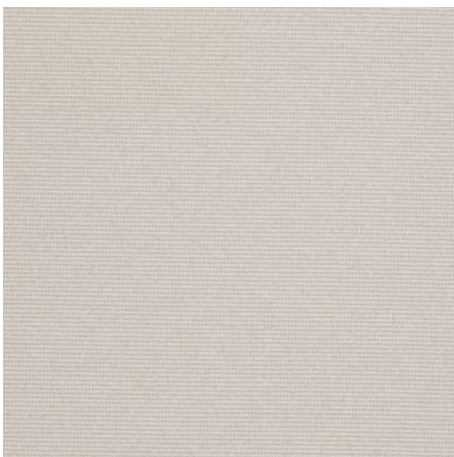
Blue Mist
163-014



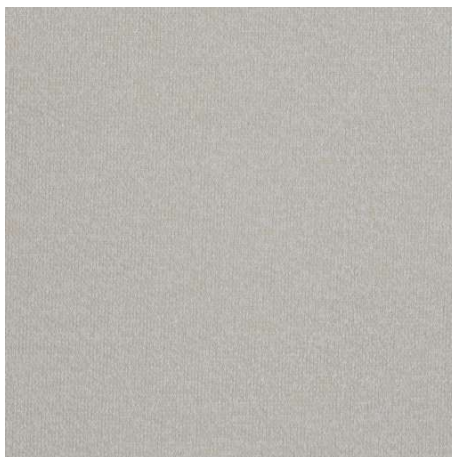
Pewter
163-006



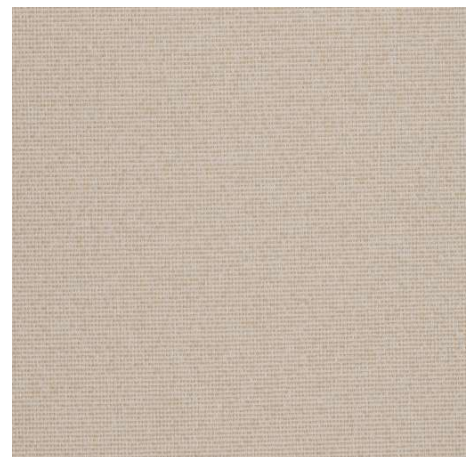
Fog
163-016



Parchment
163-007



Sand
163-017



Raffia
163-009