

PARAGON  
157-016, Fog

TECHNICAL INFORMATION

CATEGORY: Panel  
CONTENT: 100% Recycled Polyester (61% Pre-/39% Post-Consumer)  
BACKING: None  
FINISH: None  
WIDTH: 66"  
WEIGHT: 11.54 oz./ln yd  
SHOWN RAILROADED: No  
DIRECTIONAL: Yes  
APPROX. ROLL SIZE: 60 yards

PERFORMANCE



ABRASION RESISTANCE: n/a  
BREAKING STRENGTH: Warp 100.0 / Fill 100.0  
COLORFASTNESS TO CROCKING: Dry: Class 4 min/Wet: Class 3 min  
COLORFASTNESS TO LIGHT: 40 hours  
PILLING RESISTANCE: Class N/A  
SEAM SLIPPAGE: Warp 98.0 / Fill 97.0

FLAMMABILITY

PASSES CAL TB 117-2013  
NFPA 260/UFAC CLASS 1  
AB 2998 COMPLIANT  
ASTM E84 CLASS 1 OR A (UNADHERED)  
MAY COMPLY WITH CAL. TECH. BUL. 133 WHEN COMBINED WITH APPROPRIATE COMPONENTS



REDUCED ENVIRONMENTAL IMPACT

GREENGUARD GOLD CERTIFIED  
PFAS FREE  
NO FR ADDITIVES  
HHI / GREENHEALTH COMPLIANT  
NO ANTIMICROBIAL ADDITIVES  
NO ANTIBACTERIAL ADDITIVES  
MINDFUL MATERIALS COMPLIANT  
PROP 65 COMPLIANT  
MILLED IN AMERICA  
DOES NOT CONTAIN CONFLICT MINERALS

## WARRANTY

PANEL | '5' FIVE YEAR WARRANTY

See [Warranty Terms](#) for more information.

## DYE TRANSFER DISCLAIMER

Certain clothing and accessory dyes (such as those used on denim jeans) may migrate to lighter colors. This phenomenon is increased by humidity and temperature and is irreversible. Mayer Fabrics will not assume responsibility for dye transfer caused by external contaminants. Please check compatibility when using this product in combination with painted or varnished surfaces.

## ADDITIONAL INFORMATION

Custom Colors: All patterns can be custom colored. Minimum yardage applies.

Digital Swatch Color Matching: Due to color variations on different monitors and color printers, actual swatch colors may vary slightly. Please request a memo sample from Mayer Fabrics to ensure proper color representation.

## CLEANING & MAINTENANCE

WS: Water/Solvent Cleaner - Spot clean with a mild solvent, an upholstery shampoo, or the foam from a mild detergent. When using a solvent or dry cleaning product, follow instructions carefully and clean only in a well-ventilated room. Avoid any product that contains carbon tetrachloride or other toxic materials. With either method, pretest a small area before proceeding. Always rinse promptly with clean water.

BC: Bleach Cleanable - 1 parts bleach, 9 parts water = 10% bleach, 90% water solution. Do not clean / disinfect fabric for longer than 10 minutes using the 10% bleach solution. Always rinse promptly with clean water after applying the bleach solution. Failure to do so will void any and all warranties.



® This 100% polyester fabric is included in the Underwriter's Laboratory Fabric Recognition Program. Additional testing of this U.L. recognized component is not required on approved panels from participating manufacturers.



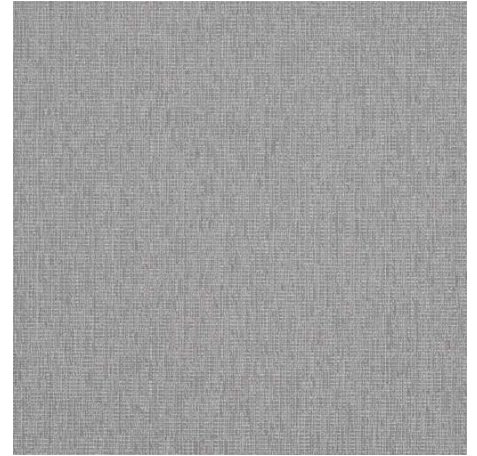
**PARAGON COLORS (9)**



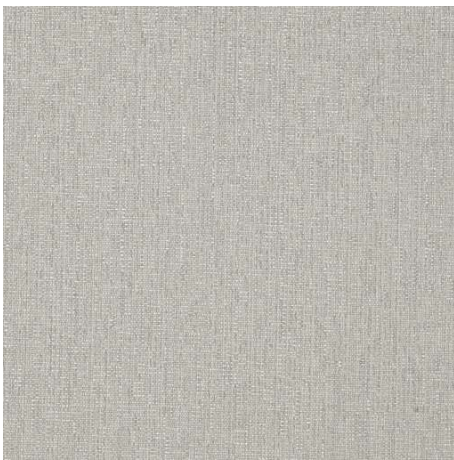
**Cliff**  
157-000



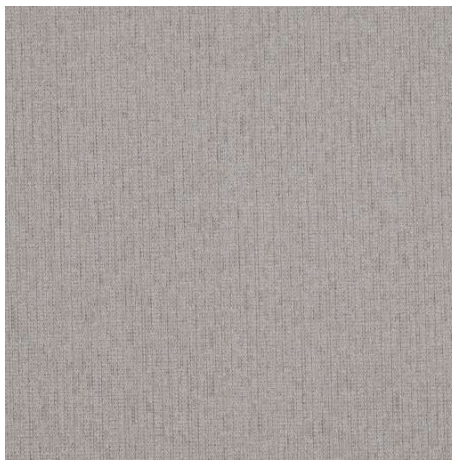
**Ambrosia**  
157-003



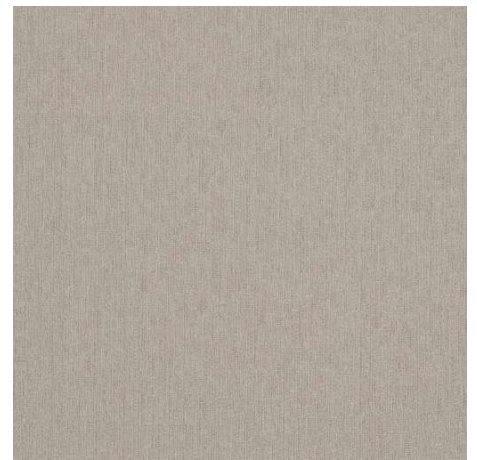
**Sky**  
157-004



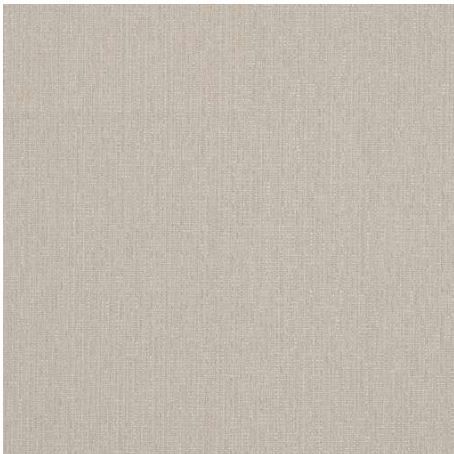
**Blue Mist**  
157-014



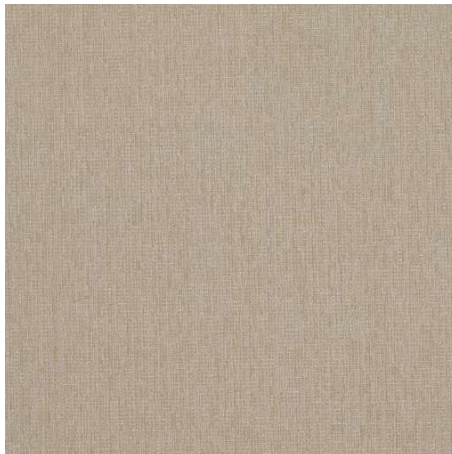
**Pewter**  
157-006



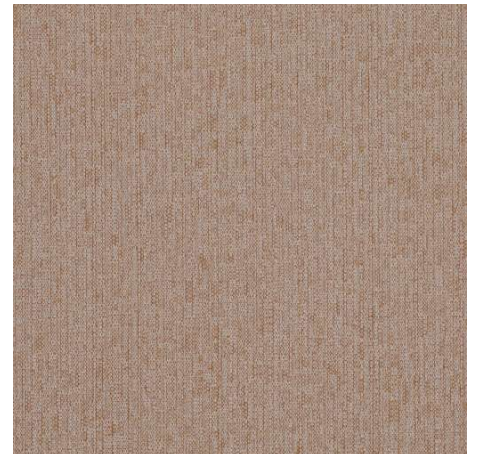
**Fog**  
157-016



**Quartz**  
157-007



**Sand**  
157-017



**Spice**  
157-009