

LUMINARY

100-000, Earth

TECHNICAL INFORMATION

CATEGORY: Panel

CONTENT: 63% Recycled Polyester (60% Pre-/3% Post-Consumer),
37% Polypropylene

BACKING: None

FINISH: Polyester Binder

WIDTH: 66"

WEIGHT: 10.6 oz./ln yd

SHOWN RAILROADED: No

DIRECTIONAL: Yes

APPROX. ROLL SIZE: 57 yards

PERFORMANCE



ABRASION RESISTANCE: n/a

BREAKING STRENGTH: Warp 175.0 / Fill 125.0

COLORFASTNESS TO CROCKING: Dry: Class 4 min/Wet: Class 3 min

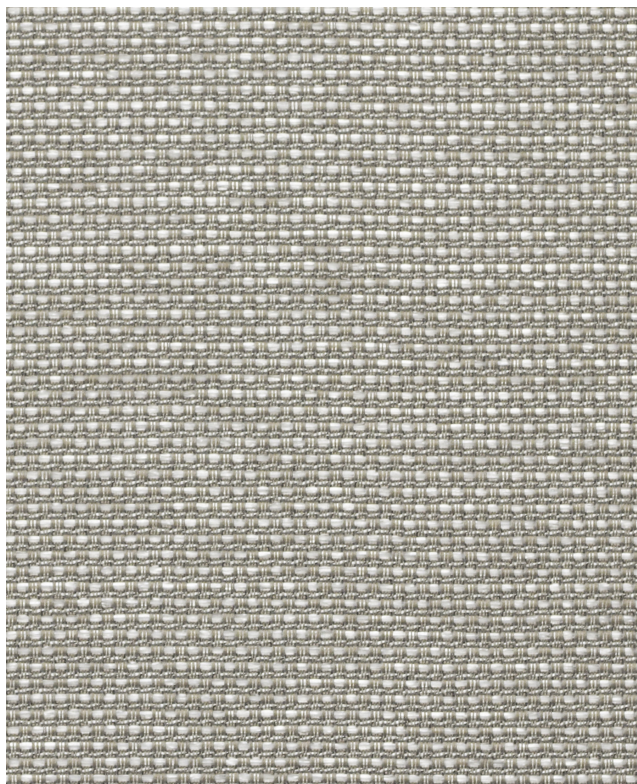
COLORFASTNESS TO LIGHT: 60 hours

PILLING RESISTANCE: Class N/A

FLAMMABILITY

PASSES AB 2998 COMPLIANT

ASTM E84 CLASS 1 OR A (UNADHERED)



REDUCED ENVIRONMENTAL IMPACT

GREENGUARD GOLD CERTIFIED

PFAS FREE

NO FR ADDITIVES

HHI / GREENHEALTH COMPLIANT

NO ANTIMICROBIAL ADDITIVES

NO ANTIBACTERIAL ADDITIVES

MINDFUL MATERIALS COMPLIANT

BPA FREE

FORMALDEHYDE FREE

TRIS FREE

PROP 65 COMPLIANT

MILLED IN AMERICA

REACH COMPLIANT

ROHS COMPLIANT

DOES NOT CONTAIN CONFLICT MINERALS

WARRANTY

PANEL | '5' FIVE YEAR WARRANTY

See [Warranty Terms](#) for more information.

DYE TRANSFER DISCLAIMER

Certain clothing and accessory dyes (such as those used on denim jeans) may migrate to lighter colors. This phenomenon is increased by humidity and temperature and is irreversible. Mayer Fabrics will not assume responsibility for dye transfer caused by external contaminants. Please check compatibility when using this product in combination with painted or varnished surfaces.

ADDITIONAL INFORMATION

Custom Colors: All patterns can be custom colored. Minimum yardage applies.

Digital Swatch Color Matching: Due to color variations on different monitors and color printers, actual swatch colors may vary slightly. Please request a memo sample from Mayer Fabrics to ensure proper color representation.

CLEANING & MAINTENANCE

WS: Water/Solvent Cleaner - Spot clean with a mild solvent, an upholstery shampoo, or the foam from a mild detergent. When using a solvent or dry cleaning product, follow instructions carefully and clean only in a well-ventilated room. Avoid any product that contains carbon tetrachloride or other toxic materials. With either method, pretest a small area before proceeding. Always rinse promptly with clean water.

BC: Bleach Cleanable - 1 parts bleach, 9 parts water = 10% bleach, 90% water solution. Do not clean / disinfect fabric for longer than 10 minutes using the 10% bleach solution. Always rinse promptly with clean water after applying the bleach solution. Failure to do so will void any and all warranties.



® This 100% polyester fabric is included in the Underwriter's Laboratory Fabric Recognition Program. Additional testing of this U.L. recognized component is not required on approved panels from participating manufacturers.